



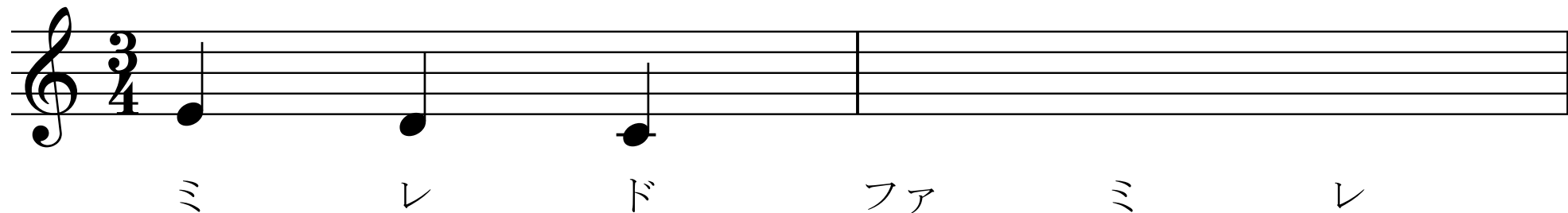
プレ初級 2-3

4ぶんの3びょうになれよう！

アリオーネ音楽教室
Line公式アカウント
とうろくしてね！

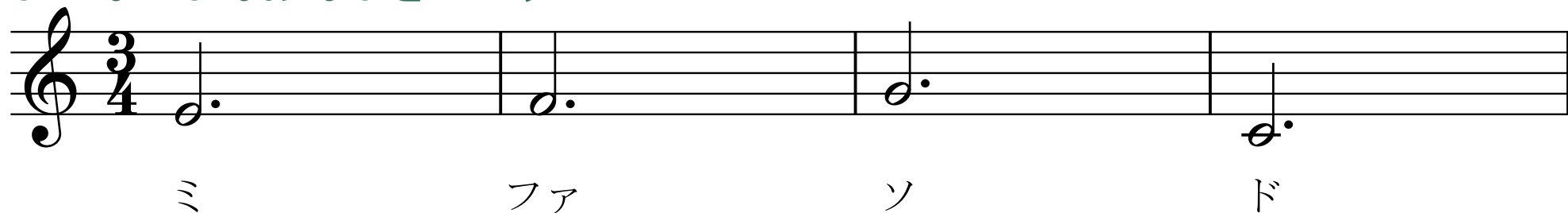


4ぶんおんぷをかこう

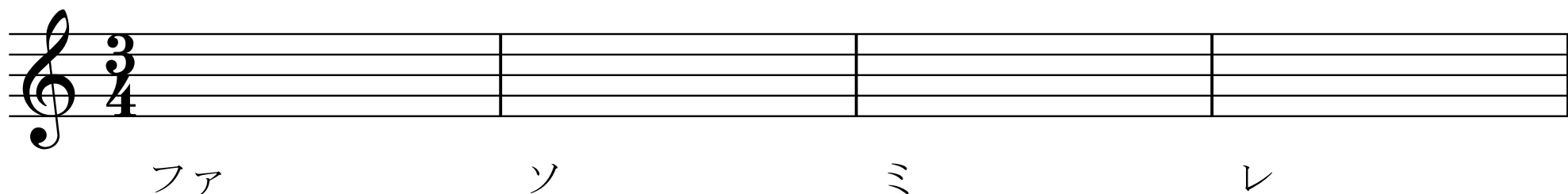


Musical staff in 3/4 time with notes and lyrics: ミ レ ド ファ ミ レ

ふてん2ぶんおんぷをかこう



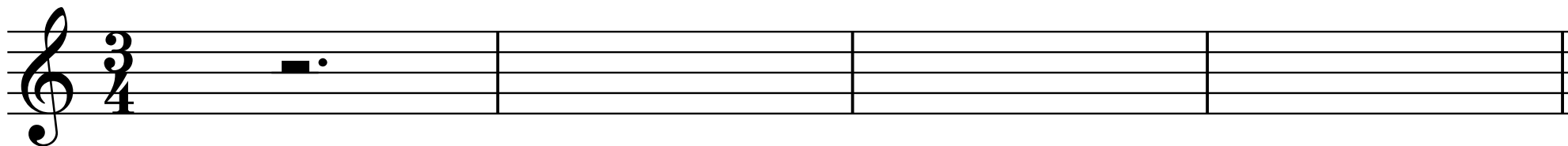
Musical staff in 3/4 time with notes and lyrics: ミ ファ ソ ド



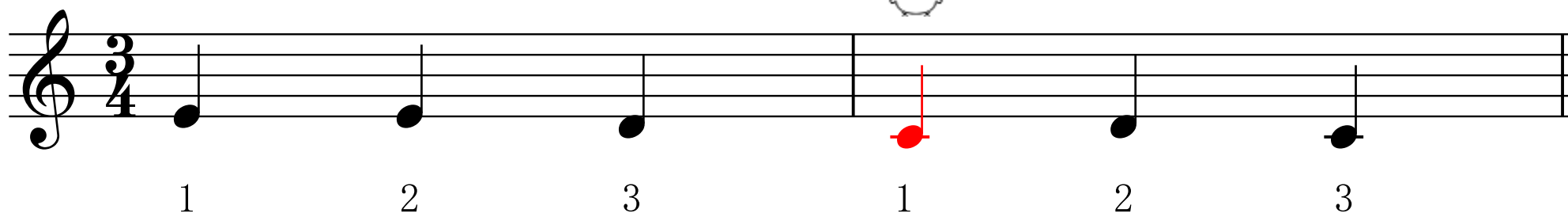
Empty musical staff with lyrics: ファ ソ ミ レ

プレ初級 2-3

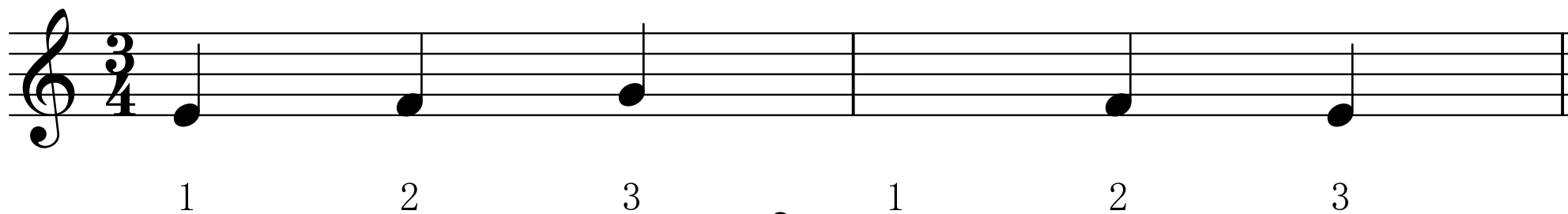
ふてん2ぶんきゅうふをかこう



れいだい1



もんだい1



プレ初級 2-3

もんだい2

1 2 3 1 2 3

れいだい2

ウン

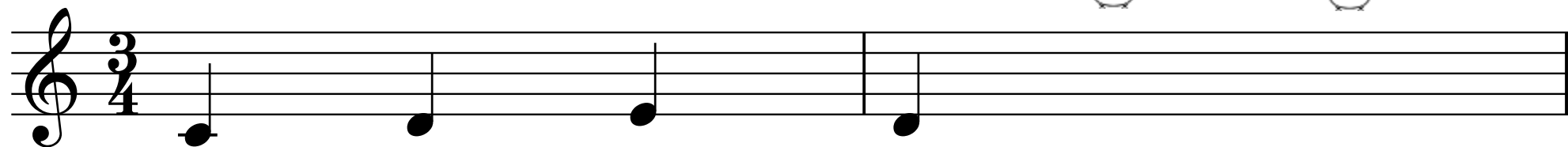
もんだい3

23

ウン

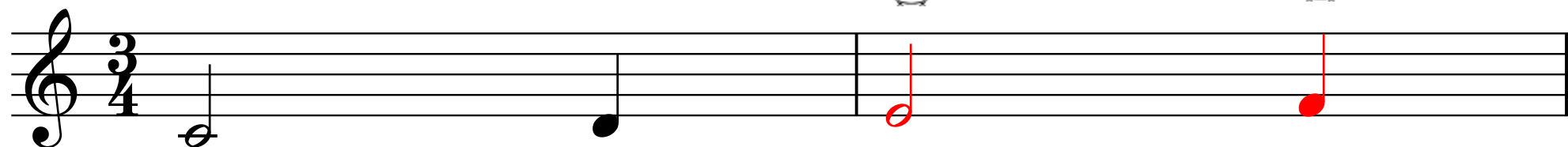
プレ初級 2-3

もんだい4

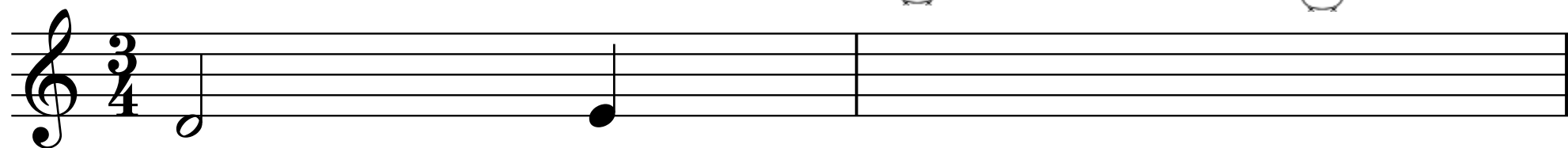


ウン

れいだい3

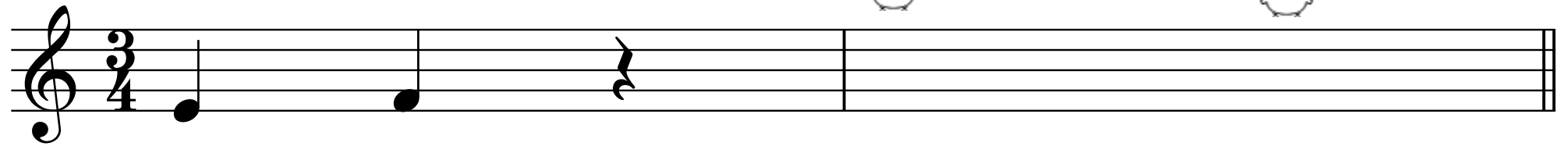


もんだい5



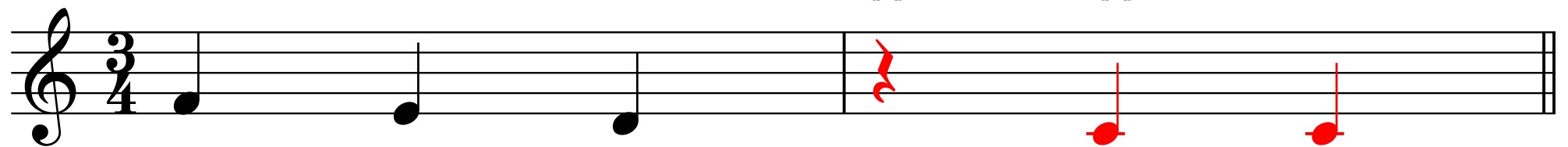
プレ初級 2-3

もんだい6



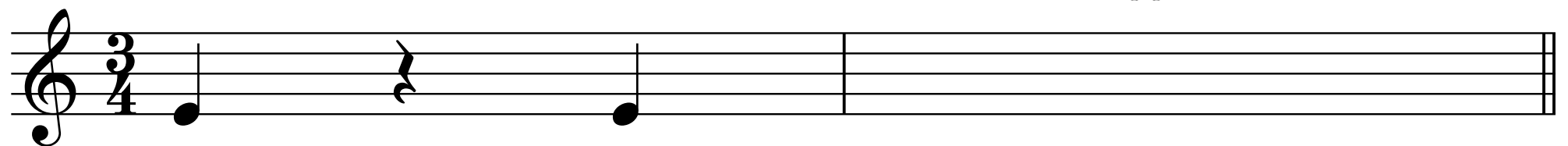
Musical staff for problem 6. The staff is in treble clef with a 3/4 time signature. The first measure contains a quarter note on G4, a quarter note on A4, and a quarter rest. The second measure is empty. There are two small cartoon bird icons above the staff, one above the first measure and one above the second measure.

れいだい4



Musical staff for problem 4. The staff is in treble clef with a 3/4 time signature. The first measure contains a quarter note on G4, a quarter note on A4, and a quarter note on B4. The second measure contains a quarter rest, a quarter note on G4, and a quarter note on A4. There are three small cartoon bird icons above the staff, one above the first measure and two above the second measure. The notes in the second measure are red.

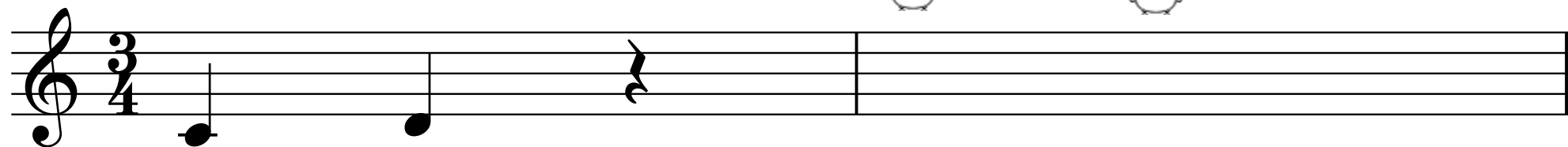
もんだい7



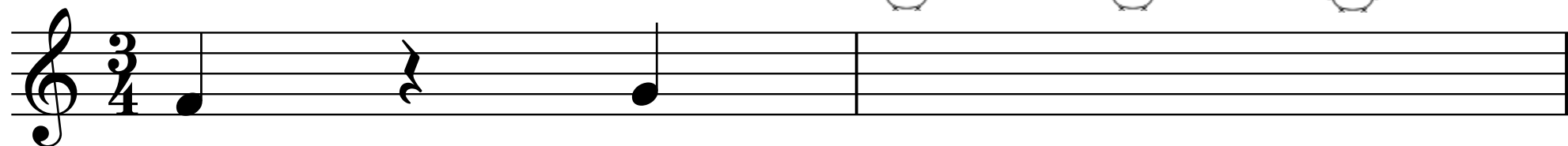
Musical staff for problem 7. The staff is in treble clef with a 3/4 time signature. The first measure contains a quarter note on G4, a quarter rest, and a quarter note on A4. The second measure is empty. There are two small cartoon bird icons above the staff, one above the first measure and one above the second measure.

プレ初級 2-3

もんだい8



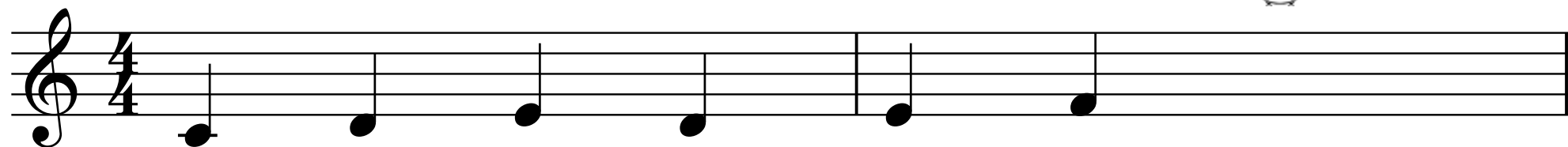
もんだい9



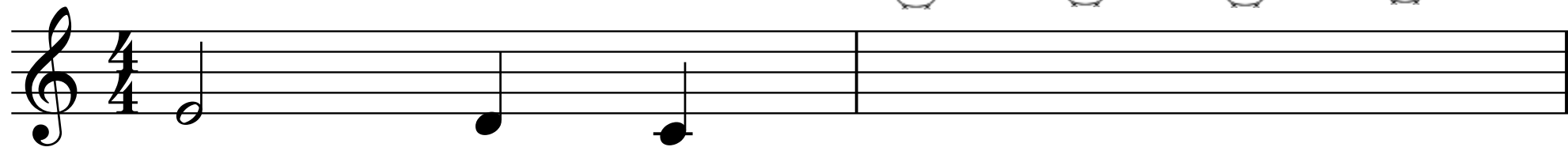
もんだい10



4びょうしだぞ、あたまをきりかえよう



もんだい11

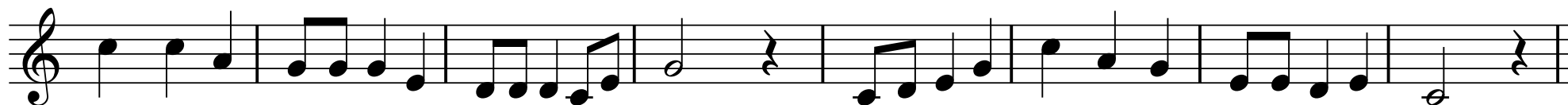


プレ初級 2-3

『こいのぼり』

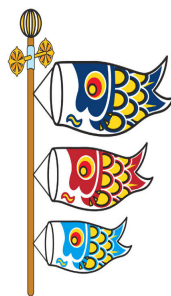


やねより たかい こいのぼり おおきい まごいは おとうさん
 1 2 3 1 2 3 1 2 3 1 2 3 1 2 3 1 2 3 1 2 3



ちいさい ひごいは こどもたち おもしろ そうに およいでる
 1 2 3 1 2 3 1 2 3 1 2 3 1 2 3 1 2 3 1 2 3

『こいのぼり』にあわせて
 1, 2, 3をくりかえしいながら



- ① 1はくめ：ひざをたたく
 - 2はくめ：むねのうえをかるくたたく
 - 3はくめ：かおのまえでてをたたく
- をくりかえしてみよう！！

②しきしてみよう！！

②しき (みぎききのばあい)

